

# CANVAS

## LAWRENCE TOWNSHIP, NJ

## LANDSCAPE PLANS

### OWNER / DEVELOPER

REYNOLDS ASSET MANAGEMENT, LLC  
45 EISENHOWER PARKWAY, #500  
PARAMUS, NEW JERSEY 07652  
PHONE: (267) 303-3382

### LANDSCAPE ARCHITECT

MELILLO | BAUER | CARMAN  
LANDSCAPE ARCHITECTURE  
200 UNION AVENUE  
BRIELLE, NEW JERSEY 08730  
PHONE: (732) 528-0664

### ARCHITECT

THRIVEN DESIGN  
756 HADDON AVENUE  
COLLINGSWOOD, NEW JERSEY 08108  
PHONE: (856) 854-1880

### CIVIL ENGINEER

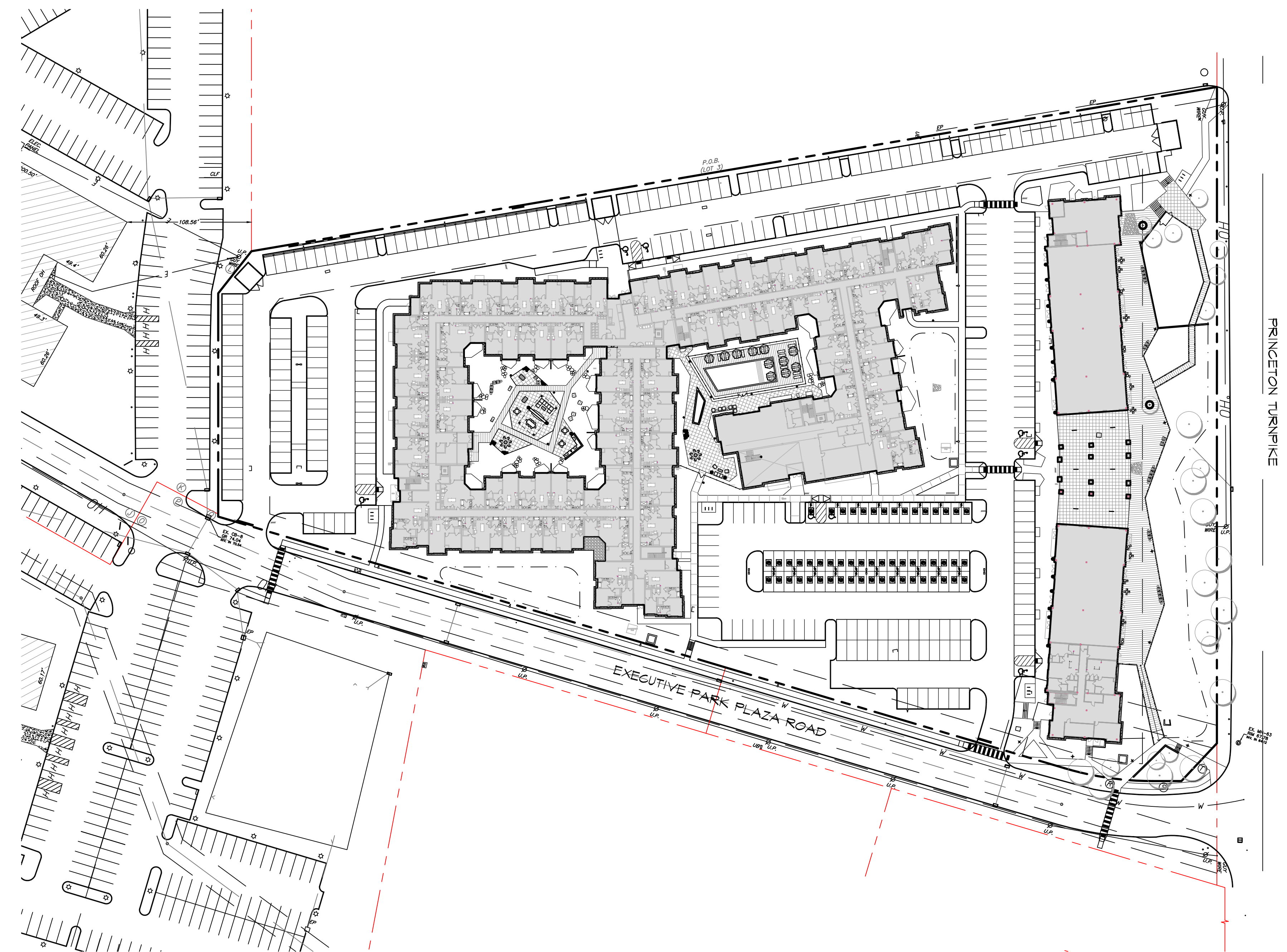
MIDATLANTIC ENGINEERING PARTNERS  
1971 HIGHWAY 34, SUITE 201  
WALL TOWNSHIP, NEW JERSEY 07719  
PHONE: (732) 722-5899

### **04/24/2024 (SITE PLAN SUBMISSION)**

<b>CANVAS</b>			
<b>(PROJECT #24-110)</b>			
<b>DRAWING LIST</b>			
	COVER SHEET	DATE	
L-1	OVERALL PLAN	04.24.24	SITE PLAN SUBMISSION
L-2	LANDSCAPE PLAN	04.24.24	SITE PLAN SUBMISSION
L-3	LIGHTING PLAN	04.24.24	SITE PLAN SUBMISSION
L-4	SITE DETAILS	04.24.24	SITE PLAN SUBMISSION
L-5	RENDERED VIEWS	04.24.24	SITE PLAN SUBMISSION
L-6	RENDERED VIEWS	04.24.24	SITE PLAN SUBMISSION
L-7	PLANTING DETAILS	04.24.24	SITE PLAN SUBMISSION

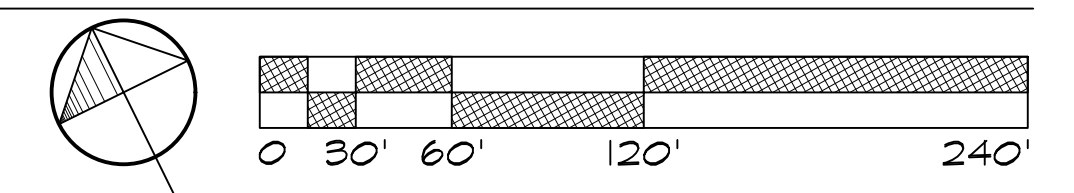
### General Notes:

1. THE CONTRACTOR SHALL GIVE ALL NOTICES AND COMPLY WITH ALL LAWS, ORDINANCES, RULES, REGULATIONS, AND LAWFUL ORDERS OF ANY PUBLIC AUTHORITY BEARING ON THE PERFORMANCE OF THE WORK.
2. ALL BASE INFORMATION AND UTILITY LAYOUT WAS PROVIDED BY: MIDATLANTIC ENGINEERING PARTNERS 1971 HIGHWAY 34, SUITE 201, WALL TOWNSHIP, NEW JERSEY 07719 (732) 722-5899
3. ALL GRADING SHALL BE VERIFIED IN THE FIELD BEFORE CONSTRUCTION AND SHALL BE COORDINATED WITH THE LANDSCAPE ARCHITECT AND CIVIL ENGINEER.
4. ALL PAVING SURFACES SHALL BE FLUSH AND MEET SMOOTHLY AND EVENLY. NO WALKS SHALL EXCEED 5% OR A 2% CROSS-PITCH. ALL WALKS TO BE LAID OUT IN THE FIELD UNDER THE DIRECTION OF THE LANDSCAPE ARCHITECT.
5. ALL SITE DETAILS SHALL BE REVIEWED AND SUPPLEMENTED BY A PROFESSIONAL NEW JERSEY LICENSED STRUCTURAL ENGINEER WHO SHALL SPECIFY ALL STRUCTURAL DATA, FOOTINGS, REINFORCEMENT, HARDWARE, ETC. REQUIRED FOR STRUCTURAL INTEGRITY, SAFETY AND COMPLIANCE WITH LOCAL CODES AND CONDITIONS PRIOR TO CONSTRUCTION.
6. ALL ARCHITECTURAL INFORMATION WAS PROVIDED BY: THRIVEN DESIGN 756 HADDON AVENUE, COLLINGSWOOD, NEW JERSEY 08108 (856) 854-1880
7. ALL PLANTED AREAS SHALL BE IRRIGATED WITH DRIP IRRIGATION. CONTRACTOR SHALL SUBMIT SHOP DRAWINGS.
8. ALL PLANT MATERIAL/LANDSCAPE MATERIALS SUBSTITUTIONS SHALL BE APPROVED BY THE L.A./OWNERS REPRESENTATIVE.

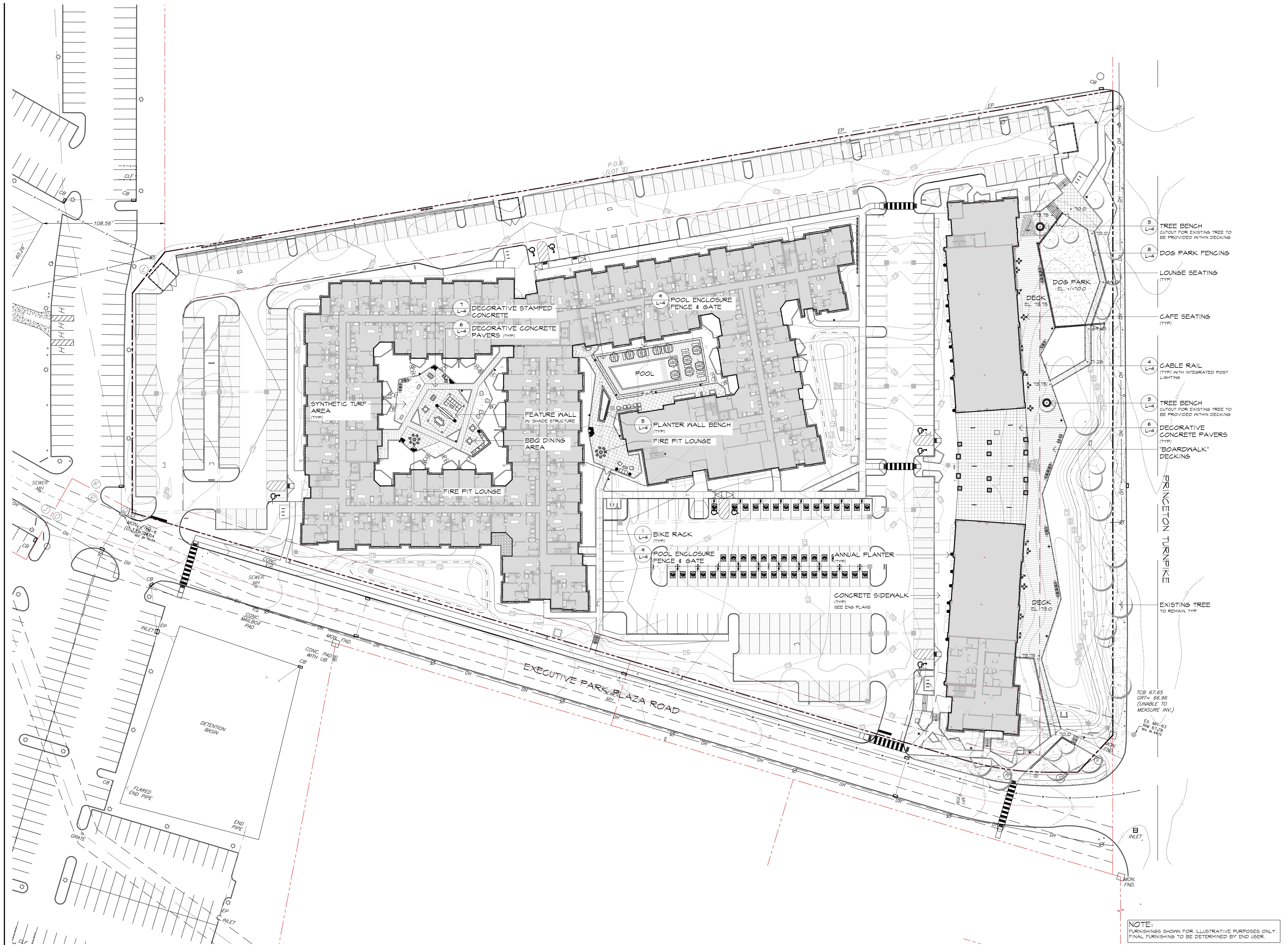


**OVERALL PLAN**

SCALE: 1" = 60'-0"

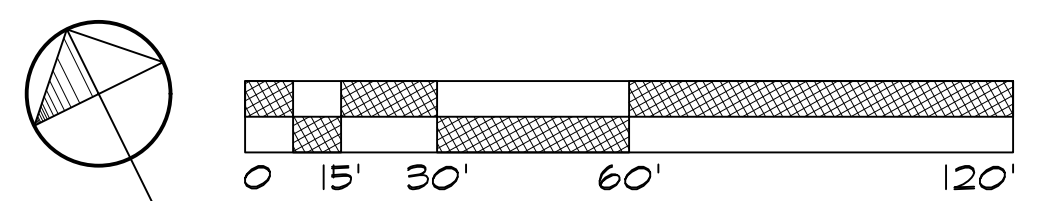


**MBC**  
MELILLO • BAUER • CARMAN  
LANDSCAPE ARCHITECTURE



- 3 L-4 TREE BENCH  
CUTOUT FOR EXISTING TREE TO  
BE PROVIDED WITHIN DECKING
- 4 L-4 DOG PARK FENCING
- 5 L-4 LOUNGE SEATING  
(TYP)
- 6 L-4 CAFE SEATING  
(TYP)
- 7 L-4 DECORATIVE STAMPED  
CONCRETE
- 8 L-4 DECORATIVE CONCRETE  
PAVERS (TYP)
- 9 L-4 POOL ENCLOSURE  
FENCE & GATE
- 10 L-4 PLANTER WALL BENCH  
(TYP)  
FIRE PIT LOUNGE
- 11 L-4 BIKE RACK  
(TYP)
- 12 L-4 POOL ENCLOSURE  
FENCE & GATE
- 13 L-4 ANNUAL PLANTER  
(TYP)
- 14 CONCRETE SIDEWALK  
(TYP)  
SEE ENG PLANS
- 15 DECK  
EL. 119.0
- 16 DECK  
EL. 119.0
- 17 DECK  
EL. 119.0
- 18 DECK  
EL. 119.0
- 19 DECK  
EL. 119.0
- 20 DECK  
EL. 119.0
- 21 DECK  
EL. 119.0
- 22 DECK  
EL. 119.0
- 23 DECK  
EL. 119.0
- 24 DECK  
EL. 119.0
- 25 DECK  
EL. 119.0
- 26 DECK  
EL. 119.0
- 27 DECK  
EL. 119.0
- 28 DECK  
EL. 119.0
- 29 DECK  
EL. 119.0
- 30 DECK  
EL. 119.0
- 31 DECK  
EL. 119.0
- 32 DECK  
EL. 119.0
- 33 DECK  
EL. 119.0
- 34 DECK  
EL. 119.0
- 35 DECK  
EL. 119.0
- 36 DECK  
EL. 119.0
- 37 DECK  
EL. 119.0
- 38 DECK  
EL. 119.0
- 39 DECK  
EL. 119.0
- 40 DECK  
EL. 119.0
- 41 DECK  
EL. 119.0
- 42 DECK  
EL. 119.0
- 43 DECK  
EL. 119.0
- 44 DECK  
EL. 119.0
- 45 DECK  
EL. 119.0
- 46 DECK  
EL. 119.0
- 47 DECK  
EL. 119.0
- 48 DECK  
EL. 119.0
- 49 DECK  
EL. 119.0
- 50 DECK  
EL. 119.0
- 51 DECK  
EL. 119.0
- 52 DECK  
EL. 119.0
- 53 DECK  
EL. 119.0
- 54 DECK  
EL. 119.0
- 55 DECK  
EL. 119.0
- 56 DECK  
EL. 119.0
- 57 DECK  
EL. 119.0
- 58 DECK  
EL. 119.0
- 59 DECK  
EL. 119.0
- 60 DECK  
EL. 119.0
- 61 DECK  
EL. 119.0
- 62 DECK  
EL. 119.0
- 63 DECK  
EL. 119.0
- 64 DECK  
EL. 119.0
- 65 DECK  
EL. 119.0
- 66 DECK  
EL. 119.0
- 67 DECK  
EL. 119.0
- 68 DECK  
EL. 119.0
- 69 DECK  
EL. 119.0
- 70 DECK  
EL. 119.0
- 71 DECK  
EL. 119.0
- 72 DECK  
EL. 119.0
- 73 DECK  
EL. 119.0
- 74 DECK  
EL. 119.0
- 75 DECK  
EL. 119.0
- 76 DECK  
EL. 119.0
- 77 DECK  
EL. 119.0
- 78 DECK  
EL. 119.0
- 79 DECK  
EL. 119.0
- 80 DECK  
EL. 119.0
- 81 DECK  
EL. 119.0
- 82 DECK  
EL. 119.0
- 83 DECK  
EL. 119.0
- 84 DECK  
EL. 119.0
- 85 DECK  
EL. 119.0
- 86 DECK  
EL. 119.0
- 87 DECK  
EL. 119.0
- 88 DECK  
EL. 119.0
- 89 DECK  
EL. 119.0
- 90 DECK  
EL. 119.0
- 91 DECK  
EL. 119.0
- 92 DECK  
EL. 119.0
- 93 DECK  
EL. 119.0
- 94 DECK  
EL. 119.0
- 95 DECK  
EL. 119.0
- 96 DECK  
EL. 119.0
- 97 DECK  
EL. 119.0
- 98 DECK  
EL. 119.0
- 99 DECK  
EL. 119.0
- 100 DECK  
EL. 119.0

NOTE:  
FURNISHINGS SHOWN FOR ILLUSTRATIVE PURPOSES ONLY.  
FINAL FURNISHING TO BE DETERMINED BY END USER.



Overall Plan

Canvas  
Lawrence Township, New Jersey

**MBC**  
MELLILLO • BAUER • CARMAN  
LANDSCAPE ARCHITECTURE

200 Union Avenue  
Spadel, NJ  
08730

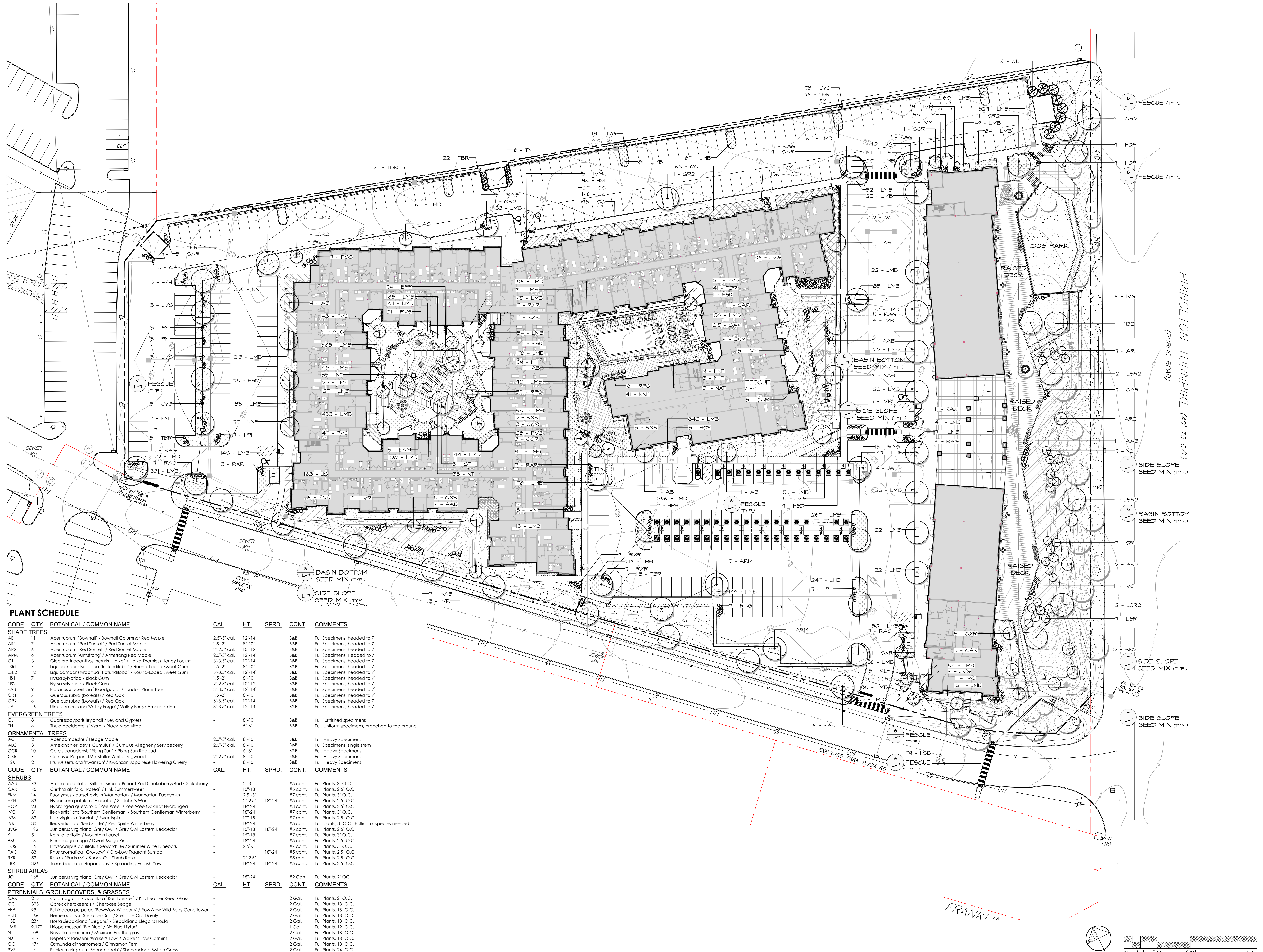
295 Newark Avenue  
Newark City, NJ  
07102

732-528-0664  
www.mbcldg.design  
NJCA No. 214H0001700

THE STATE OF NEW JERSEY  
THOMAS B. BAUER  
000019  
LICENSED  
LANDSCAPE ARCHITECT

NO.	DATE	REVISION
DATE: 04/24/24		JOB NO.: 24-110

DRAWING NO.  
**L-1**



**PLANT SCHEDULE**

CODE	QTY	BOTANICAL / COMMON NAME	CAL.	HT.	SPRD.	CONT.	COMMENTS
<b>SHADE TREES</b>							
AS	11	Acer rubrum 'Bowhall' / Bowhall Columnar Red Maple	2.5'-3' cal.	12'-14'		B&B	Full Specimens, headed to 7'
AR1	7	Acer rubrum 'Red Sunset' / Red Sunset Maple	1.5'-2'	8'-10'		B&B	Full Specimens, headed to 7'
AR2	6	Acer rubrum 'Red Sunset' / Red Sunset Maple	2.5'-3' cal.	10'-12'		B&B	Full Specimens, headed to 7'
ARM	6	Acer rubrum 'Armstrong' / Armstrong Red Maple	2.5'-3' cal.	12'-14'		B&B	Full Specimens, headed to 7'
GTH	3	Gleditsia triacanthos inermis 'Halko' / Halko Thornless Honey Locust	3'-3.5' cal.	12'-14'		B&B	Full Specimens, headed to 7'
LSR1	7	Liquidambar styraciflua 'Rotundiloba' / Round-lobed Sweet Gum	1.5'-2'	8'-10'		B&B	Full Specimens, headed to 7'
LSR2	12	Liquidambar styraciflua 'Rotundiloba' / Round-lobed Sweet Gum	3'-3.5' cal.	12'-14'		B&B	Full Specimens, headed to 7'
NS1	7	Nyssa sylvatica / Black Gum	1.5'-2'	8'-10'		B&B	Full Specimens, headed to 7'
NS2	1	Nyssa sylvatica / Black Gum	2'-2.5' cal.	10'-12'		B&B	Full Specimens, headed to 7'
PAB	9	Platanus x acerifolia 'Bloodgood' / London Plane Tree	3'-3.5' cal.	12'-14'		B&B	Full Specimens, headed to 7'
QR1	7	Quercus rubra (borealis) / Red Oak	1.5'-2'	8'-10'		B&B	Full Specimens, headed to 7'
QR2	6	Quercus rubra (borealis) / Red Oak	3'-3.5' cal.	12'-14'		B&B	Full Specimens, headed to 7'
UA	16	Ulmus americana 'Valley Forge' / Valley Forge American Elm	3'-3.5' cal.	12'-14'		B&B	Full Specimens, headed to 7'
<b>EVERGREEN TREES</b>							
CL	8	Cupressocyparis leylandii / Leyland Cypress	-	8'-10'		B&B	Full Furnished specimens
TN	6	Taxus occidentalis 'Nigra' / Black Arborvitae	-	5'-6'		B&B	Full, uniform specimens, branched to the ground
<b>ORNAMENTAL TREES</b>							
AC	2	Acer campestre / Hedge Maple	2.5'-3' cal.	8'-10'		B&B	Full, Heavy Specimens
ALC	3	Amelanchier laevis 'Cumulus' / Cumulus Allegheny Serviceberry	2.5'-3' cal.	8'-10'		B&B	Full Specimens, single stem
CCR	10	Cercis canadensis 'Rising Sun' / Rising Sun Redbud	6'-8'			B&B	Full, Heavy Specimens
CXR	7	Cornus x 'Rutgan' TM / Stella White Dogwood	2'-2.5' cal.	8'-10'		B&B	Full, Heavy Specimens
PSK	2	Prunus serrulata 'Kwanzan' / Kwanzan Japanese Flowering Cherry	8'-10'			B&B	Full, Heavy Specimens
CODE	QTY	BOTANICAL / COMMON NAME	CAL.	HT.	SPRD.	CONT.	COMMENTS
<b>SHRUBS</b>							
AAB	43	Aronia arbutifolia 'Billionstars' / Brilliant Red Chokeberry/Red Chokeberry	-	2'-3'		#5 cont.	Full Plants, 3' O.C.
AR	45	Clethra alnifolia 'Rosae' / Pink Summersweet	-	15'-18"		#5 cont.	Full Plants, 2.5' O.C.
EKM	14	Euonymus kiautschovicus 'Manhattan' / Manhattan Euonymus	-	2.5'-3'		#7 cont.	Full Plants, 3' O.C.
HPH	33	Hypericum patulum 'Hidcote' / St. John's Wort	-	2'-2.5'	18"-24"	#5 cont.	Full Plants, 2.5' O.C.
HQP	23	Hydrangea quercifolia 'Pee Wee' / Pee Wee Oakleaf Hydrangea	-	18"-24"		#3 cont.	Full Plants, 2.5' O.C.
IVG	31	Ilex verticillata 'Southern Gentleman' / Southern Gentleman Winterberry	-	18"-24"		#7 cont.	Full Plants, 3' O.C.
IVM	32	Ilex virginica 'Merlot' / Sweetpire	-	12'-15'		#7 cont.	Full Plants, 2.5' O.C.
IVR	30	Ilex verticillata 'Red Sprite' / Red Sprite Winterberry	-	18"-24"		#5 cont.	Full Plants, 3' O.C., Pollinator species needed
JVG	192	Juniperus virginiana 'Grey Owl' / Grey Owl Eastern Redcedar	-	15'-18"	18"-24"	#5 cont.	Full Plants, 2.5' O.C.
KL	5	Kalmia latifolia / Mountain Laurel	-	15'-18"		#7 cont.	Full Plants, 3' O.C.
PM	13	Pinus mugo mugo / Dwarf Mugo Pine	-	18"-24"		#5 cont.	Full Plants, 2.5' O.C.
POS	16	Physocarpus opulifolius 'Seward' TM / Summer Wine Ninebark	-	2.5'-3'		#7 cont.	Full Plants, 3' O.C.
RAG	83	Rhus aromatica 'Gro-Low' / Gro-Low Fragrant Sumac	-	18"-24"		#5 cont.	Full Plants, 2.5' O.C.
RXR	92	Rosa x 'Knock Out' / Knock Out Shrub Rose	-	2'-2.5'		#5 cont.	Full Plants, 2.5' O.C.
TBR	326	Taxus baccata 'Repandens' / Spreading English Yew	-	18"-24"		#5 cont.	Full Plants, 2.5' O.C.
<b>SHRUB AREAS</b>							
JO	168	Juniperus virginiana 'Grey Owl' / Grey Owl Eastern Redcedar	-	18"-24"		#2 Can	Full Plants, 2' O.C.
CODE	QTY	BOTANICAL / COMMON NAME	CAL.	HT.	SPRD.	CONT.	COMMENTS
<b>PERENNIALS, GROUNDCOVERS, &amp; GRASSES</b>							
CAK	215	Calamagrostis x acutiflora 'Karl Foerster' / K.F. Feather Reed Grass	-	-	-	2 Gal.	Full Plants, 2' O.C.
CC	323	Carex charoensis / Charoensis Sedge	-	-	-	2 Gal.	Full Plants, 18" O.C.
EPP	99	Echinacea purpurea 'PowWow Wildberry' / PowWow Wild Berry Coneflower	-	-	-	2 Gal.	Full Plants, 18" O.C.
HSD	166	Hemerocallis x 'Stella de Oro' / Stella de Oro Daylily	-	-	-	2 Gal.	Full Plants, 18" O.C.
HSE	234	Hosta sieboldiana 'Elegans' / Sieboldiana Elegans Hosta	-	-	-	2 Gal.	Full Plants, 18" O.C.
LMB	9,172	Liriope muscari 'Big Blue' / Big Blue Lilyturf	-	-	-	1 Gal.	Full Plants, 12" O.C.
NT	109	Nassella tenuissima / Mexican Feathergrass	-	-	-	2 Gal.	Full Plants, 18" O.C.
NXF	417	Nepeta x faassenii 'Walker's Low' / Walker's Low Catmint	-	-	-	2 Gal.	Full Plants, 18" O.C.
OC	474	Osunda cinnamomea / Cinnamon Fern	-	-	-	2 Gal.	Full Plants, 18" O.C.
PVS	171	Panicum virgatum 'Shenandoah' / Shenandoah Switch Grass	-	-	-	2 Gal.	Full Plants, 24" O.C.
RFG	73	Rudbeckia fulgida 'Goldstrum' / Black-Eyed Susan	-	-	-	2 Gal.	Full Plants, 18" O.C.

Landscape Plan

Canvas  
Lawrence Township, New Jersey

**MBC**  
MEILLO • BAUER • CARMAN  
LANDSCAPE ARCHITECTURE

200 Union Avenue  
Suite, NJ  
08730

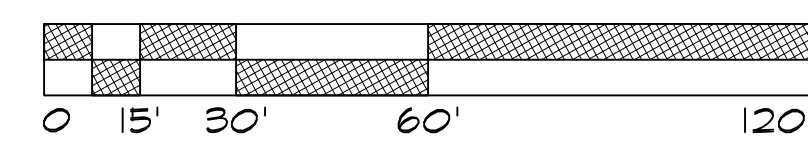
295 Newark Avenue  
Suite City, NJ  
07102

732-528-0664  
www.mbcldesign.com  
NJCA No. 214H0001700

THOMAS A. BAUER  
LICENSED LANDSCAPE ARCHITECT  
000019

NO.	DATE	REVISION
SCALE:	AS SHOWN	
DATE:	04-24-24	JOB NO.: 24-110

DRAWING NO. L-2



**POLE MOUNTED LIGHT**  
FIXTURES A, B, C, D

MODEL: DSX1  
3000K COLOR TEMPERATURE, 50W LED  
MOUNTING HEIGHT: 20'  
15' (FIXTURES MARKED WITH \*)

COLOR: BLACK  
POLE: 4" ROUND STRAIGHT ALUMINUM (RSA)  
HEIGHT: 20' 4" 15"  
MOUNTING: DM19AS  
DM28AS (FIXTURE B ONLY)  
COLOR: BLACK

AS MFG BY:  
LITHONIA LIGHTING  
ONE LITHONIA WAY  
CONYERS, GEORGIA 30012  
P: 800-7105-7378  
WWW.LITHONIALIGHTING.COM  
(OR APPROVED EQUAL)

INSTALL PER MFG. RECOMMENDATIONS

**WALL MOUNTED LIGHT**  
FIXTURES E & F

MODEL: DSXW1 LED  
3000K COLOR TEMPERATURE, 30W LED  
MOUNTING HEIGHT: 12'  
COLOR: BLACK

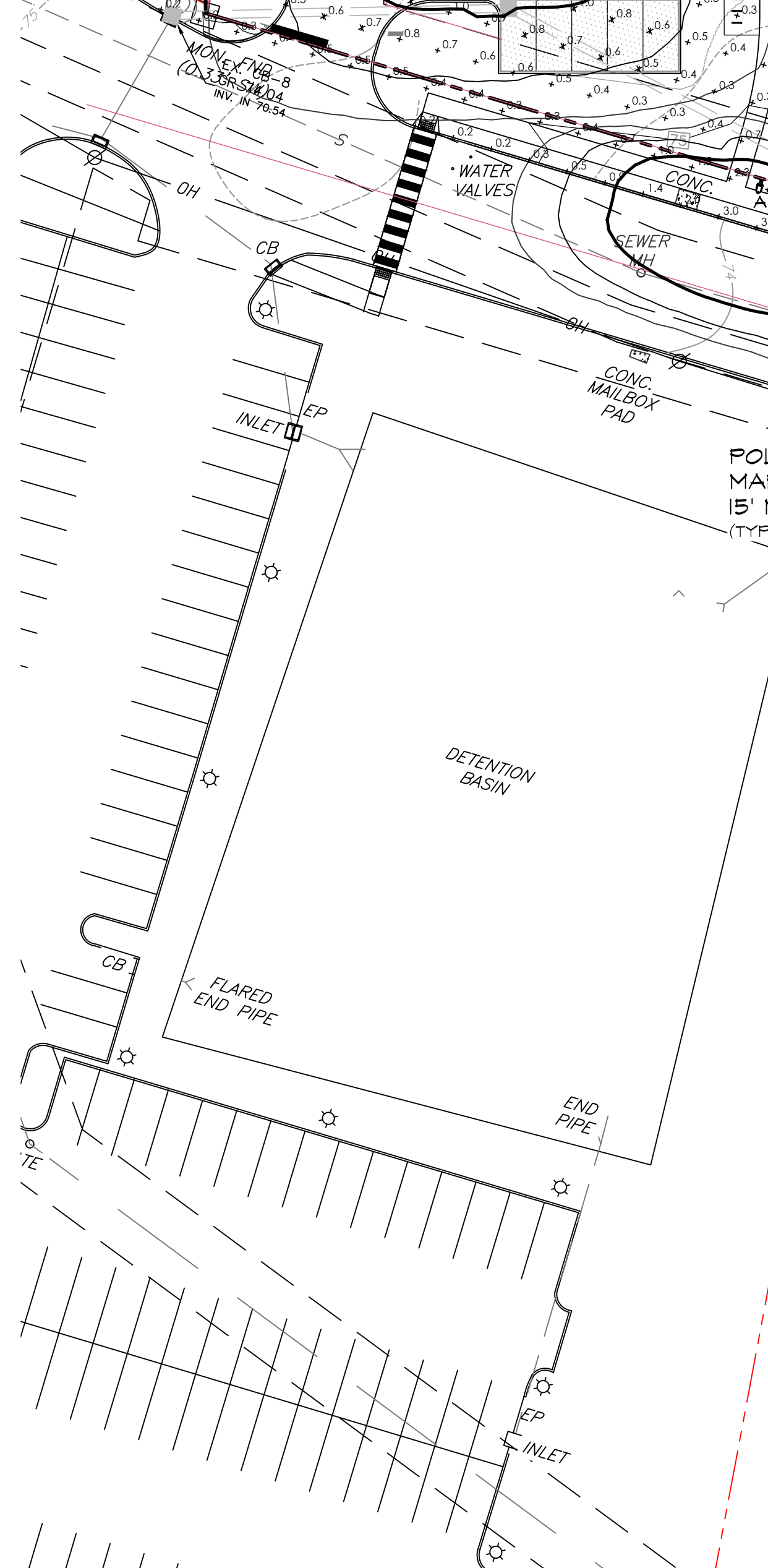
AS MFG BY:  
LITHONIA LIGHTING  
ONE LITHONIA WAY  
CONYERS, GEORGIA 30012  
P: 800-7105-7378  
WWW.LITHONIALIGHTING.COM  
(OR APPROVED EQUAL)

INSTALL PER MFG. RECOMMENDATIONS

1 L-3 DETAIL: POLE MOUNTED LIGHT

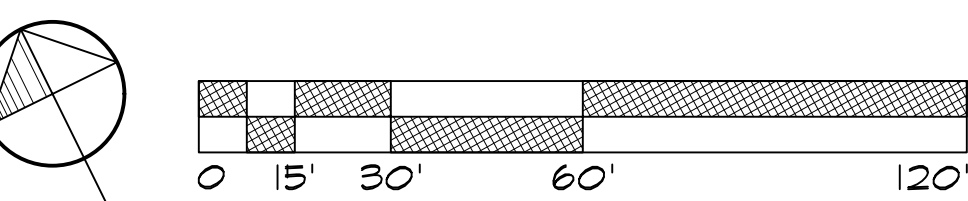
N.T.S.

POLE TO BE TRIMMED IN FIELD TO MEET 20' MOUNTING HEIGHT



Label	QTY	Manufacturer	Catalog	Description	Number Lamps	Lamp Output	Input Power
A	10	Lithonia Lighting	DSX1 LED P1 30K 70CRI T3M HS	D-Series Size 1 Area Luminaire P1 Performance Package 3000K CCT 70 CRI Type 3 Medium Houseside Shield	1	6316	50,901.5
B	5	Lithonia Lighting	DSX1 LED P1 30K 70CRI TFM	D-Series Size 1 Area Luminaire P1 Performance Package 3000K CCT 70 CRI Forward Throw	1	7446	101.8
C	3	Lithonia Lighting	DSX1 LED P1 30K 70CRI TFM HS	D-Series Size 1 Area Luminaire P1 Performance Package 3000K CCT 70 CRI Forward Throw Houseside Shield	1	6245	50,901.5
D	1	Lithonia Lighting	DSX1 LED P1 30K 70CRI T4M HS	D-Series Size 1 Area Luminaire P1 Performance Package 3000K CCT 70 CRI Type 4 Medium Houseside Shield	1	6362	50,901.5
E	4	Lithonia Lighting	DSXW1 LED 10C 1000 30K TFM MVOLT	DSXW1 LED WITH (1) 10 LED LIGHT ENGINES, TYPE TFM OPTIC, 3000K, @ 1000mA.	1	3673	38.8
F	3	Lithonia Lighting	DSXW1 LED 10C 1000 30K T3M MVOLT	DSXW1 LED WITH (1) 10 LED LIGHT ENGINES, TYPE T3M OPTIC, 3000K, @ 1000mA.	1	3606	38.8
G	6	LUMENWERX	V3SEALPD-EPDO-80-500-30-4FT	LW20201111-02-VIA SEAL	1	2000	20.27
H	11	WE-EF	115-1563	LTM440 LED-FT, Light Columns LTM440 [C60] IP55:LED-FT-37W/3K	1	4272	42
I	13	BEGA Converted by LUMCat V 27.02.2019 / H.R.		84220K3	1	1430	15

Statistics	Description	Symbol	Avg	Max	Min	Max/Min	Avg/Min
Parking			0.9 fc	3.9 fc	0.3 fc	13.0:1	3.0:1
	Promenade Breezeway		1.8 fc	6.6 fc	0.5 fc	13.2:1	3.6:1



2 L-3 DETAIL: WALL MOUNTED LIGHT

N.T.S.



**RECESSED BREEZEWAY LIGHT**  
FIXTURE G

MODEL: VIA 3 SEAL  
3000K COLOR TEMPERATURE, 20W LED  
MOUNTING HEIGHT: 10'  
FINISH: T8D

AS MFG BY:  
LUMENWERX  
3737 COTE VERTU ST-LAURENT  
QUEBEC, CANADA H4R2G1  
P: 514-225-4304  
WWW.LUMENWERX.COM  
(OR APPROVED EQUAL)

INSTALL PER MFG. RECOMMENDATIONS

3 L-3 DETAIL: BREEZEWAY LIGHT

N.T.S.



**BOARDWALK LIGHT COLUMN**  
FIXTURE H

MODEL: LTM440 LED-FT  
3000K COLOR TEMPERATURE, 37W LED  
FIXTURE HEIGHT: 13'  
COLOR: BLACK

AS MFG BY:  
WE-EF  
AS DISTRIBUTED BY:  
DIVERSIFIED GROUP  
55 LANE ROAD  
SUITE 360  
FAIRFIELD NJ 07004  
P: 973-494-1524  
WWW.DIVERSIFIED-GROUP.COM  
(OR APPROVED EQUAL)

INSTALL PER MFG. RECOMMENDATIONS

4 L-3 DETAIL: LIGHT COLUMN

N.T.S.



**BOLLARD LIGHT**  
FIXTURE I

MODEL: SHIELDED BOLLARD  
3000K COLOR TEMPERATURE, 11.5W LED  
FIXTURE HEIGHT: 3'  
COLOR: BLACK

AS MFG BY:  
BEGA  
1000 BEGA WAY  
CARPINTERIA, CA 94013  
P: 805-684-0593  
WWW.BEGA-US.COM  
(OR APPROVED EQUAL)

INSTALL PER MFG. RECOMMENDATIONS

5 L-3 DETAIL: BOLLARD LIGHT

N.T.S.



**BIKE RACK**  
 MODEL: EMERSON  
 MOUNTING: SURFACE MOUNT  
 COLOR/FINISH: TO BE SELECTED

AS MFG BY:  
 LANDSCAPE FORMS  
 1800 E. MICHIGAN AVE  
 KALAMAZOO, MI 49048  
 P: 800-430-6204  
 WWW.LANDSCAPEFORMS.COM  
 (OR APPROVED EQUAL)

INSTALL PER MFG. RECOMMENDATIONS



**TRASH/RECYCLING**  
 MODEL: MULTIPLIGITY LITTER  
 W/ RECYCLING RECEPTACLE  
 MOUNTING: SURFACE MOUNT  
 COLOR/FINISH: TO BE SELECTED

AS MFG BY:  
 LANDSCAPE FORMS  
 1800 E. MICHIGAN AVE  
 KALAMAZOO, MI 49048  
 P: 800-430-6204  
 WWW.LANDSCAPEFORMS.COM  
 (OR APPROVED EQUAL)

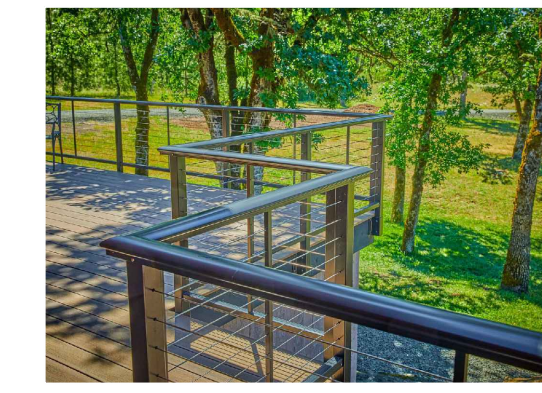
INSTALL PER MFG. RECOMMENDATIONS



**TREE BENCH**  
 MODEL: OSPEN RANGE | CIRCULAR BENCH  
 MOUNTING: SURFACE MOUNT  
 COLOR/FINISH: TO BE SELECTED  
 SEE PLAN FOR LOGATIONS

AS MFG BY:  
 MASLIN SITE FURNITURE  
 3-466 INNOVATION WAY  
 WOODSTOCK, ON N4V0B4  
 P: 800-716-8506  
 WWW.MASLIN.COM  
 (OR APPROVED EQUAL)

INSTALL PER MFG. RECOMMENDATIONS



**CABLE RAIL**  
 MODEL: DESIGN RAIL CLASSIC  
 HEIGHT: 42"  
 COLOR/FINISH: TO BE SELECTED

AS MFG BY:  
 FEENEY RAIL  
 2603 UNION ST  
 OAKLAND, CA 94607  
 P: 800-888-2418  
 WWW.LANDSCAPEFORMS.COM  
 (OR APPROVED EQUAL)

INSTALL PER MFG. RECOMMENDATIONS

1  
L-4  
DETAIL: BIKE RACK  
N.T.S.

2  
L-4  
DETAIL: TRASH & RECYCLE  
N.T.S.

3  
L-4  
DETAIL: TREE BENCH  
N.T.S.

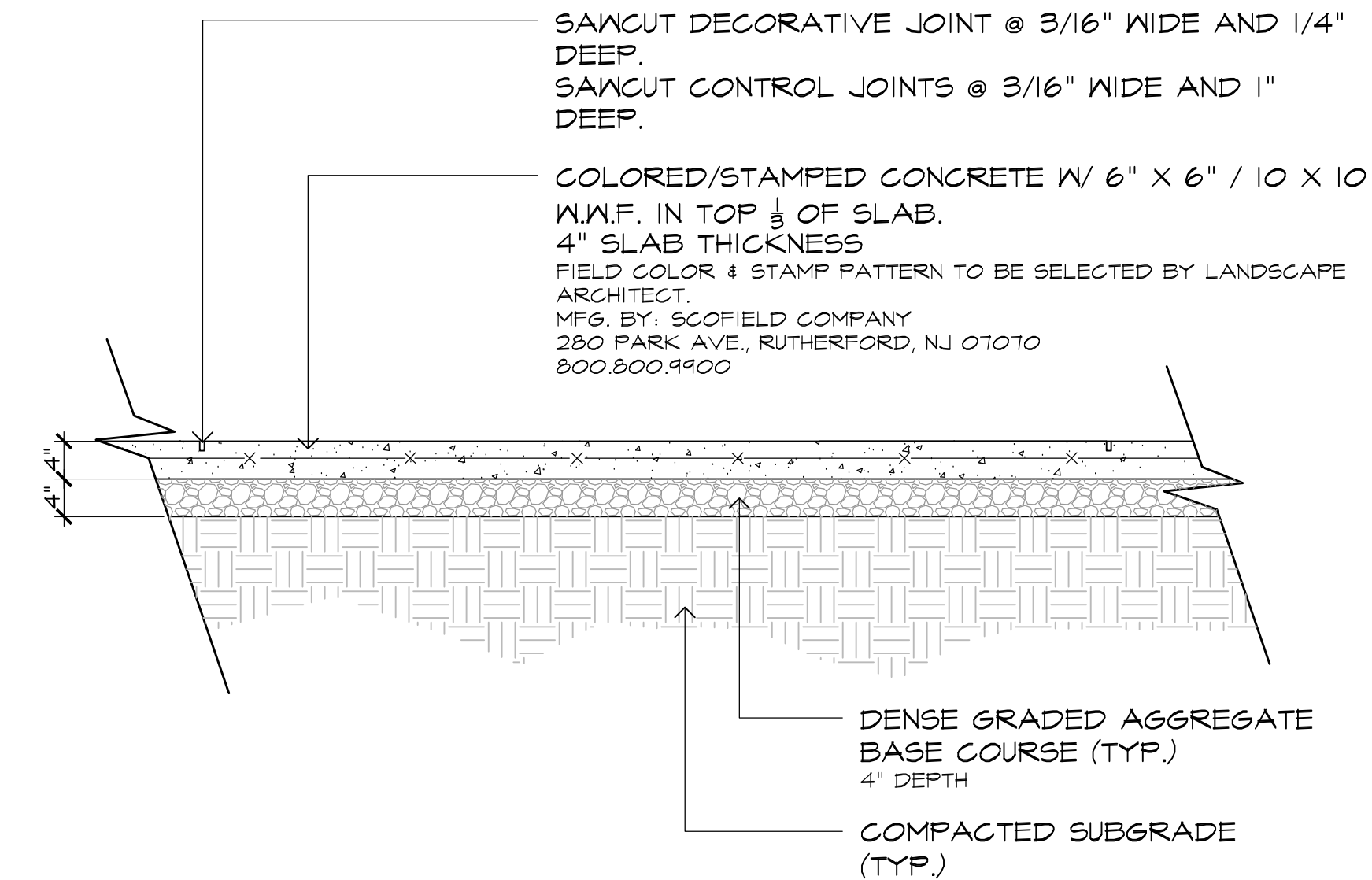
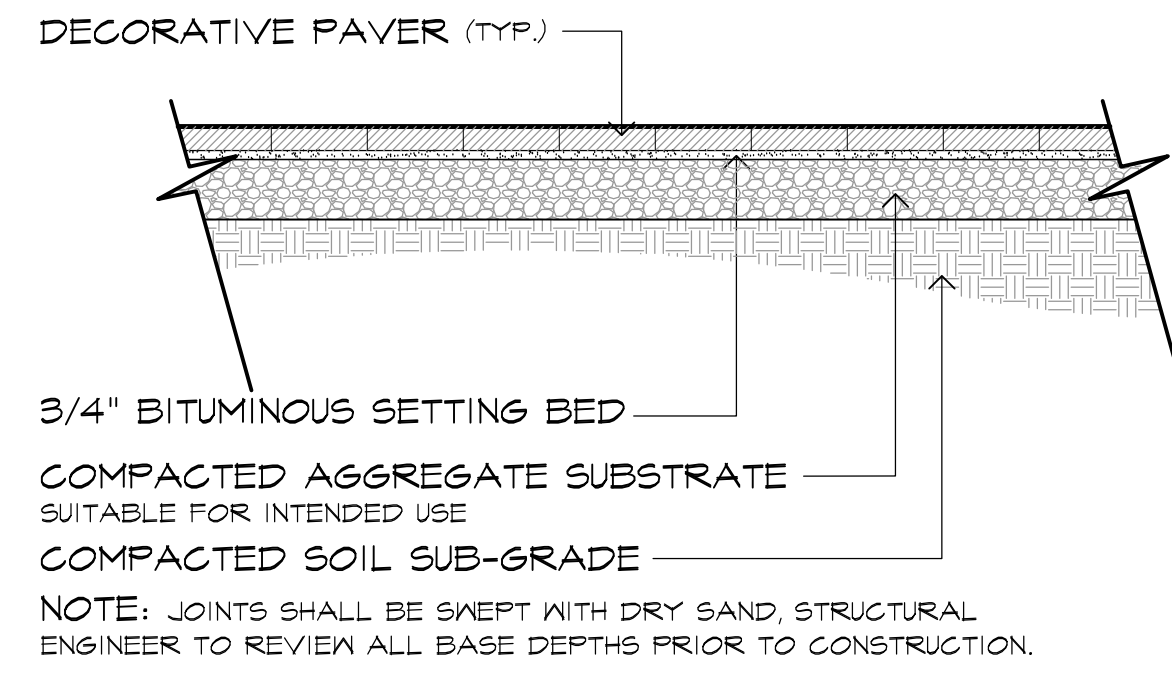
4  
L-4  
DETAIL: CABLE RAIL  
N.T.S.



**PLANTER WALL BENCH**  
 MODEL: OSPEN STRAIGHT WALL  
 COLOR/FINISH: TO BE SELECTED

AS MFG BY:  
 MASLIN SITE FURNITURE  
 3-466 INNOVATION WAY  
 WOODSTOCK, ON N4V0B4  
 P: 800-716-8506  
 WWW.MASLIN.COM  
 (OR APPROVED EQUAL)

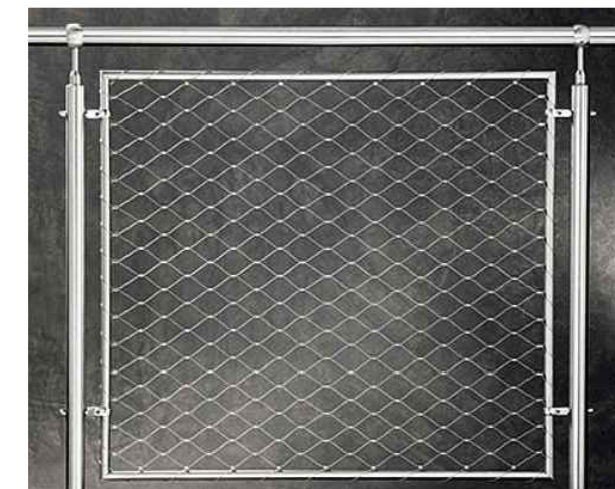
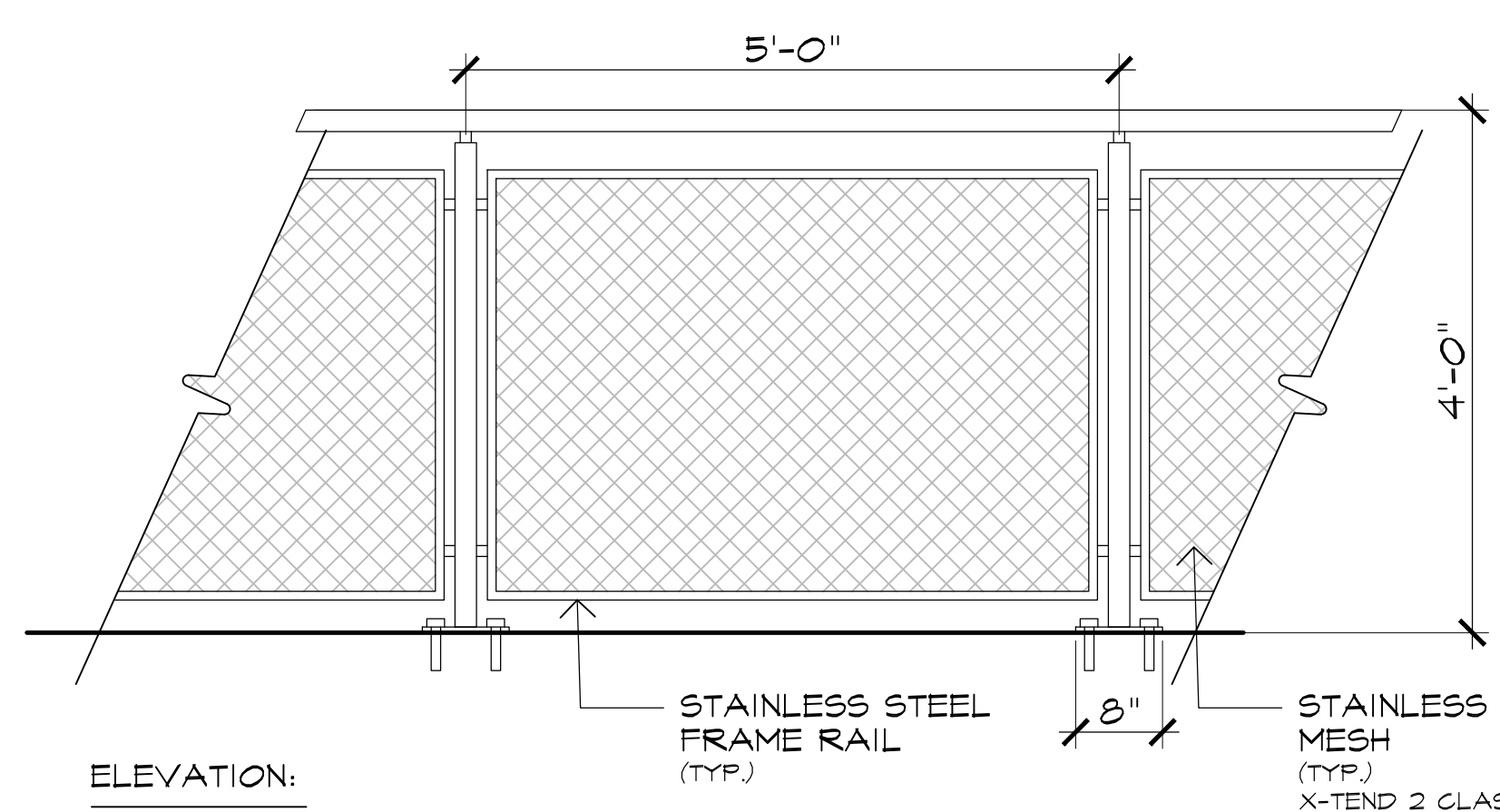
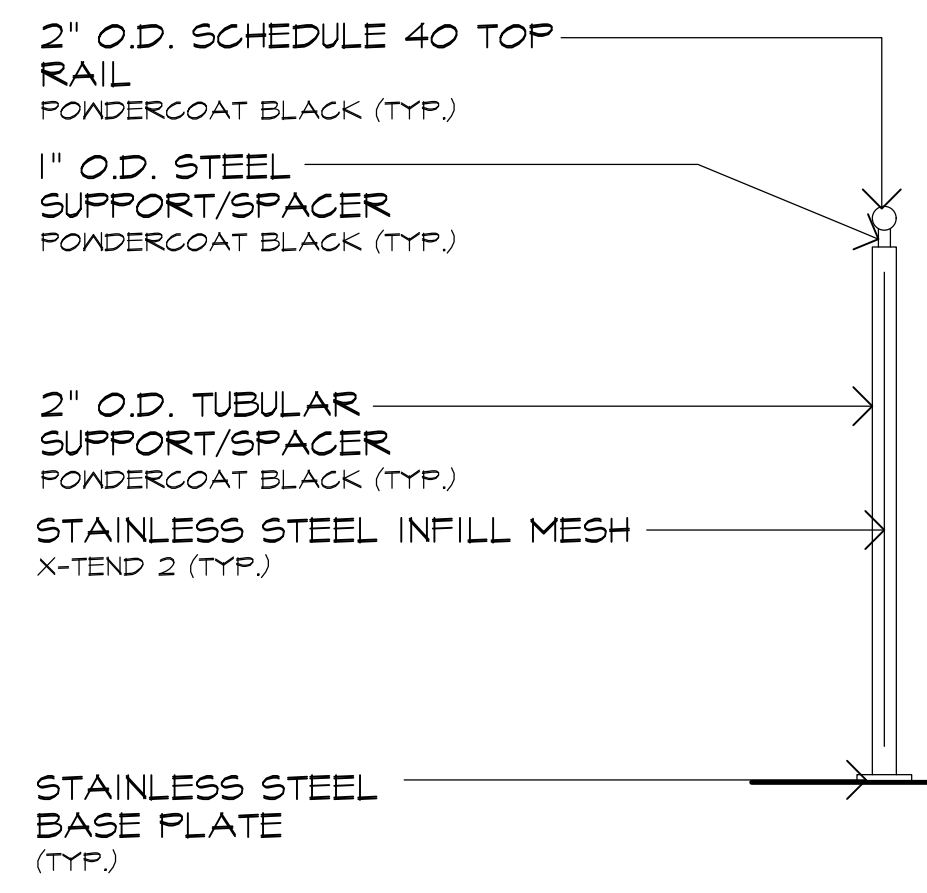
INSTALL PER MFG. RECOMMENDATIONS



5  
L-4  
DETAIL: WALL TOP BENCH  
N.T.S.

6  
L-4  
DETAIL: DECORATIVE CONCRETE PAVERS  
SCALE: 3/4" = 1'-0"

7  
L-4  
DETAIL: DECORATIVE STAMPED CONCRETE  
SCALE: 3/4" = 1'-0"

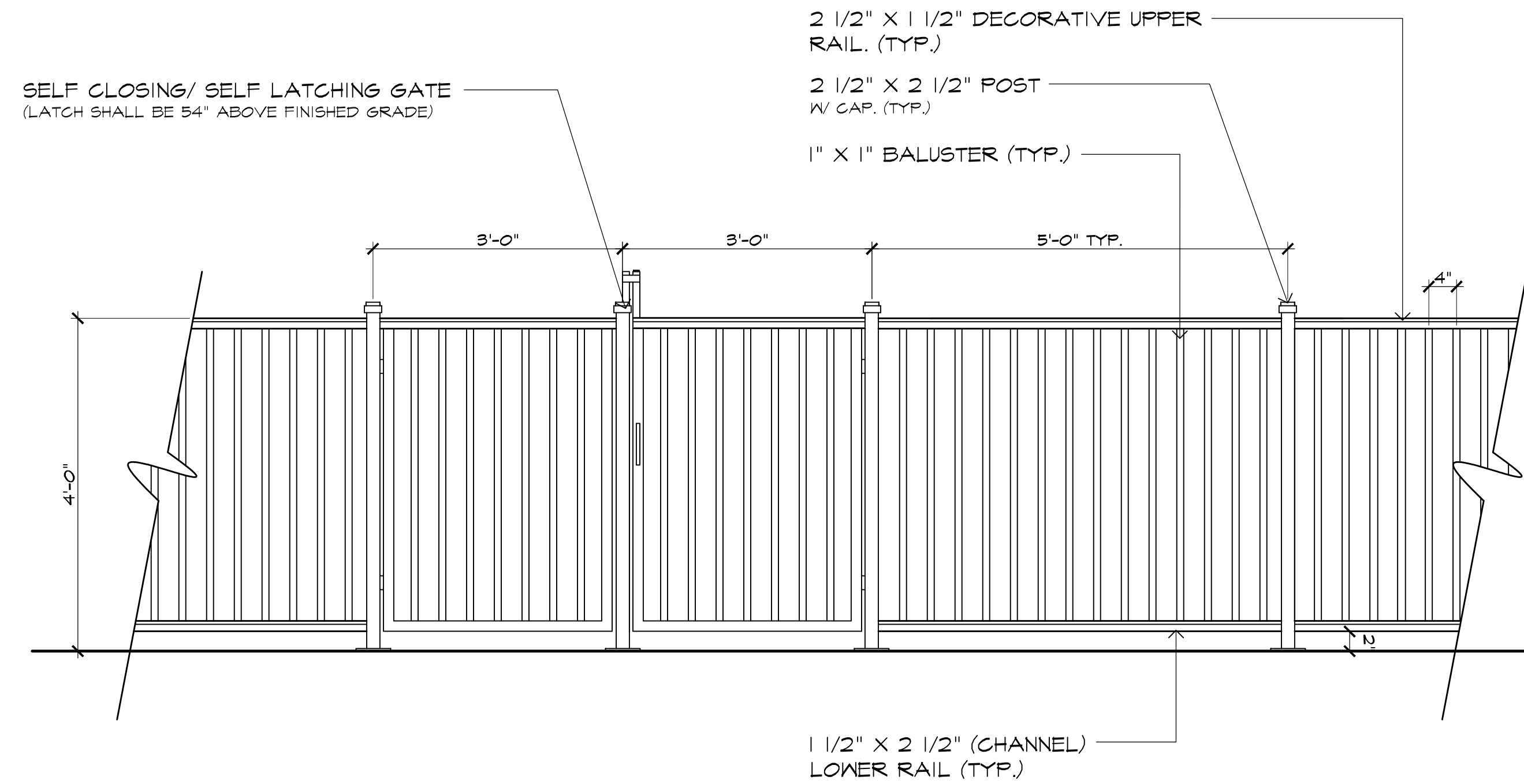


**WIRE MESH FENCE**  
 INFILL MODEL: X-TEND 2 CLASSIC FRAME SYSTEM  
 AS MANUFACTURED BY: CARL STAHL  
 2401 INTERNATIONALE PKWAY, SUITE B,  
 WOODRIDGE, IL 60517  
 P: 312.474.1100  
 E: SALES@X-TENDCABLE.COM  
 OR APPROVED EQUAL

INSTALL PER MFG. RECOMMENDATIONS  
 CONTRACTOR TO SUPPLY SHOP DRAWINGS FOR REVIEW AND APPROVAL PRIOR TO FABRICATION.

STAINLESS STEEL INFILL MESH (TYP.)  
 X-TEND 2 CLASSIC FRAME SYSTEM  
 AS MFG. BY: CARL STAHL

8  
L-4  
DETAIL: DOG PARK FENCING  
SCALE: 3/4" = 1'-0"



**ALUMINUM FENCE & GATE**  
 W/ SELF CLOSING/SELF LATCHING GATE.  
 LATCH SHALL BE 54" ABOVE FINISHED GRADE.

HEIGHT: 48"  
 COLOR: TO BE SELECTED

MFG. BY: CARFARO, INC.  
 HAMILTON TOWNSHIP, NJ 08619  
 609.890.6600

CONTRACTOR SHALL VERIFY FENCE & GATES MEET ALL CODES PRIOR TO FABRICATION.  
 CONTRACTOR TO SUBMIT SHOP DRAWINGS TO LANDSCAPE ARCHITECT FOR REVIEW AND APPROVAL PRIOR TO FABRICATION.  
 INSTALL PER MFG. RECOMMENDATIONS.

9  
L-4  
DETAIL: POOL ENCLOSURE FENCING  
SCALE: 3/4" = 1'-0"



1  
L-5

RENDERED VIEW: POOL COURTYARD

N.T.S.



2  
L-5

RENDERED VIEW: POOL COURTYARD

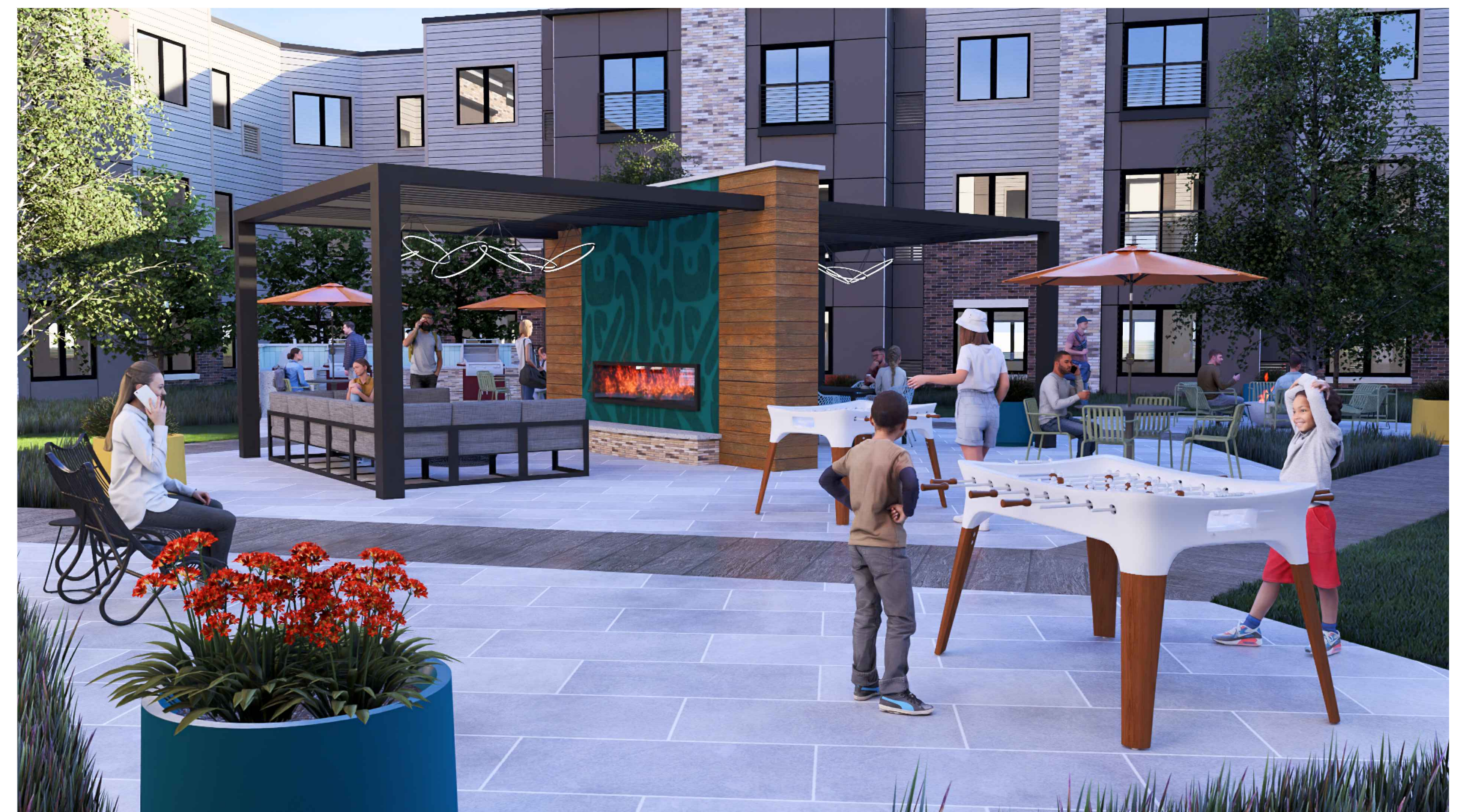
N.T.S.



3  
L-5

RENDERED VIEW: INTERIOR COURTYARD

N.T.S.



4  
L-5

RENDERED VIEW: INTERIOR COURTYARD

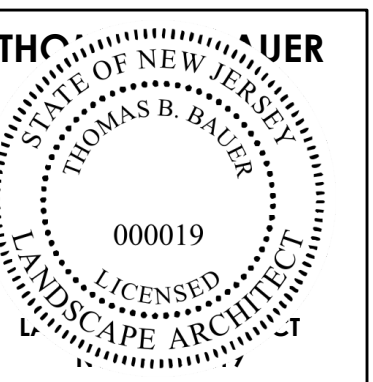
N.T.S.

Rendered Views

Canvas  
Lawrence Township, New Jersey



200 Union Avenue  
Belle, NJ 08730  
295 Newark Avenue  
Jersey City, NJ 07302  
732-528-0664  
www.mbcldg.design  
NJCA No. 219400001700



NO.	DATE	REVISION

SCALE: AS SHOWN  
DATE: 04-24-24 JOB NO.: 24-110

DRAWING NO.  
L-5



1 RENDERED VIEW: DOG PARK  
L-6

N.T.S.



2 RENDERED VIEW: BOARDWALK ACCESSIBLE PATH  
L-6

N.T.S.

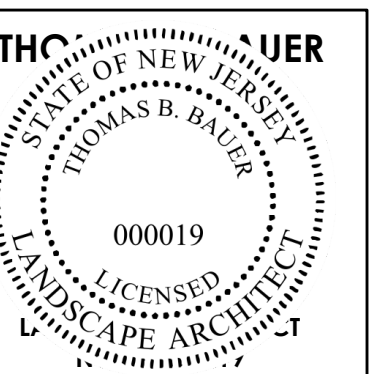
Rendered Views

Canvas  
Lawrence Township, New Jersey



MEILLO • BAUER • CARMAN  
LANDSCAPE ARCHITECTURE

200 Union Avenue 295 Newark Avenue  
Spide, NJ Jersey City, NJ  
08730 07302  
732-528-0664  
www.mbcldg.design  
NJCA No. 214H00001700



NO.	DATE	REVISION

SCALE: AS SHOWN

DATE: 04/24/24 JOB NO.: 24-110

DRAWING NO.

L-6

